

	Document No.: F-RD-020/01-LES-050 Issued date : 29.06.2017 Revision No.: 03 Revised date: 02.09.2020					
PRODUCT CODE: LES-050	MANUFACTURER APPROVAL:			DATE: 02.09.2020		
	CUSTOMER APPROVAL:			DATE:		
Product style	Frozen surimi sticks 250g V/P					
Customer	PremiumFish S.L.U.					
Declared pack size (kg)	5 (250g x 20packs)					
Ingredients	water, surimi 25% [fish meat, sugar, stabilisers: E420, E451(i), E450(iii)], wheat starch, potato starch, sugar, modified starch, rapeseed oil, soy protein, salt, flavourings (contain crustaceans, soy and flavour enhancers: E635, E631), flavour enhancer (E635), egg white powder, colours: carmines (E120), paprika extract (E160c)					
Recommended ingredients declaration	water, surimi 25% (fish), wheat starch, potato starch, sugar, modified starch, rapeseed oil, soy protein, salt, flavourings (crustaceans and soy), flavour enhancers (E631, E635), egg white powder, colours (E120, E160c)					
Raw material description (commercial name, latin name, FAO, fishing gear)	Pacific Whiting, <i>Merluccius productus</i> , FAO 67; midwater otter trawl and/or Alaska Pollock, <i>Theragra chalcogramma</i> , FAO 61 & FAO 67; midwater otter trawl and/or Leather Jacket, <i>Odonus niger</i> , FAO 51; midwater otter trawl and/or ESO, <i>Saurida tumbil</i> , FAO 51; midwater otter trawl and/or Tachiuo, <i>Lepturacanthus savala</i> , FAO 51; midwater otter trawl					
ALLERGEN STATUS (product)	Present in formulation		Present in same production line		Present in production facility	
	Y	N	Y	N	Y	N
1. Cereals containing gluten (wheat, rye, barley, oats, spelt, kamut or their hybrid strains)	x		x		x	
2. Crustaceans and products thereof	x		x		x	
3. Eggs and products thereof	x		x		x	
4. Fish and products thereof	x		x		x	
5. Peanuts and products thereof		x		x		x
6. Soybeans and products thereof	x		x		x	
7. Milk and products thereof (including lactose)		x		x		x
8. Nuts and products thereof		x		x		x
9. Celery and products thereof		x		x		x
10. Mustard and products thereof		x		x	x	
11. Sesame seeds and products thereof		x		x		x
12. Sulphur dioxide and sulphites at concentrations higher than 10 mg/kg or 10 mg/litro expressed as SO2)		x		x		x
13. Lupin and products thereof		x		x		x
14. Molluscs and products thereof		x		x		x

	Document No.: F-RD-020/01-LES-050 Issued date : 29.06.2017 Revision No.: 03 Revised date: 02.09.2020
PRODUCT CODE: LES-050	MANUFACTURER APPROVAL: DATE: 02.09.2020 CUSTOMER APPROVAL: DATE:

Analytical details:

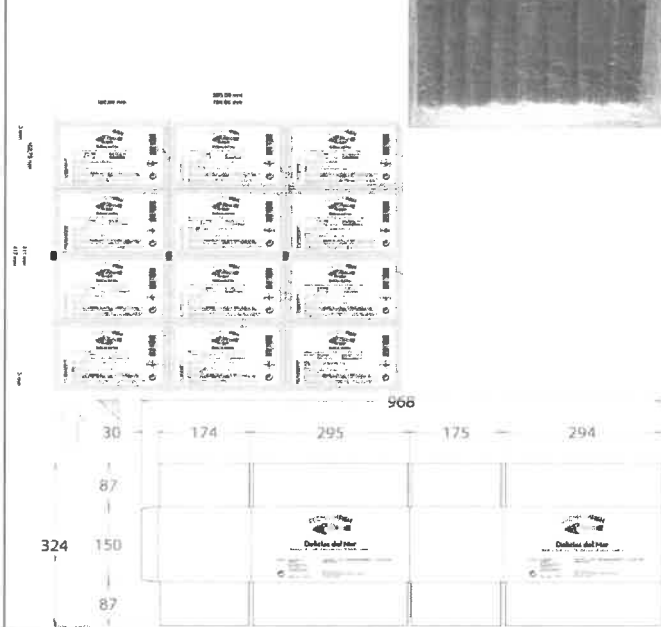
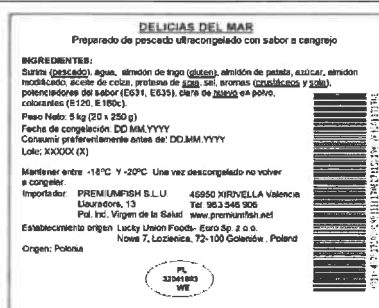
Parameters	Limits
Standard length, average (cm)	7,5±0,3
Standard weight, average (g)	15,9±0,3
Angle (degrees)	90
Slit	max
Texture	slight firm, slight elastic
Flavour	crab
Colour	red
Moisture (%)	70 ± 5
pH	7,0 ± 0,5

Microbiological standards:

Parameters	Limits
TVC (cfu/g)	≤ 5 x10 ⁴
E.coli (cfu/g)	<10
Staphylococcus aureus (cfu/g)	<10
Salmonella spp. (In 25g)	Absent
Listeria monocytogenes (in 25g)	Absent

Nutrition declaration (g/100 g):

Energy (KJ/kcal)	477/ 113
Fat	1,9
of which saturates	0,2
Carbohydrate	17,8
of which sugars	5,3
Fibre	<0,5
Protein	5,9
Salt	1,65

Product photos:**Label image:****Packaging details:**

Primary	Type of packaging: thermoformed tray, top film: printed, bottom film: plain, depth: 28 mm Dimensions (L x W mm): 167,5 x 102,5 Weight (g): 3,0 Printing on the pack: (lot) A or B or CXYYYY (time) HH:MM (production date) DD.MM.YYYY (best before) DD.MM.YYYY (A - first line, B - second line, C - third line, X - year, YYY - julian day, F - frozen eg. A7021F 09:25: frozen product produced on line no 1, 21st of January at 9:25am in 2017
Secondary I	Type of packaging: Master carton + printed label (120x100 mm; as attached above) Dimensions (L x W x H mm): 295 x 179 x 151 Weight (g): 176 Closure: cello tape Coding format on the outer case: lot number 1 or 2 or 3 XYYYY (1-6) 1- first tunnel, 2- second tunnel, 3- third tunnel, X - year, YYY - julian day, 1 to 6 - time period 1: from 6:00 to 9:00, 2: from 9:01 to 12:00, 3: from 12:01 to 15:00, 4: from 15:01 to 18:00, 5: from 18:01 to 21:00, 6: from 21:01 to 00:00 eg. 17021 (6): product produced in tunnel 1 between 21:01 to 00:00, 21st of January 2017
Secondary II	Type of packaging: Dimensions (L x W x H mm): - Weight (g): - Closure: -
Palletization	1 pallet = 10 layers of 16 cartons = 160 cartons x 5 kg = 800 kg (net)
Total shelf life and storage conditions	24 months at the temperature – 18°C or below